

### Features & Benefits

- Supports up to 12" x 9.6" M/B
- 4-bay 3.5" HDD cage with 12Gb/s SATA and mini-SAS HD backplane
- 6-bay 2.5" HDD cage with mini-SAS backplane
- Tool-less installation for bezel, HDD cage, side cover and fans
- Supports key lock and Kensington security slot
- Rackable by slide rail (SR20966)
- Supports PS/2 single PSU

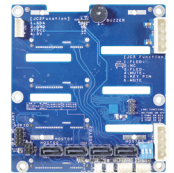


### Specification

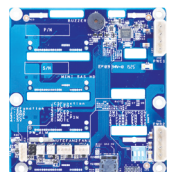
<b>M/B Form Factor</b>	• ATX (12" x 9.6")
<b>Dimension (D x W x H)</b>	• 465mm x 198mm x 425mm, 18.3" x 7.8" x 16.7(Bezel not included)
<b>Drive Bay</b>	• Exposed: 3 x 5.25" • HDD cage: 4 x 3.5" (Fixed or H/S) or 6 x 2.5"(H/S)
<b>PSU Form Factor</b>	• PS/2 Single
<b>Indicators</b>	• 1 x Power Status, 1 x HDD Activity, 2 x LAN Activity • 1 x Fan Failure and Overheat
<b>Front Control</b>	• Power On/Off, Alarm Mute, System Reset, 2x USB2.0/ USB3.0 (Option)
<b>Cooling Fans</b>	• Front(option): 1 x 80mm or 92mm, Rear: 1 x 120mm, PWM
<b>System Security</b>	• Intrusion Switch, Key lock and Kensington security slot
<b>Slot Opening</b>	• 7 (5 x full length + 2 x half length)
<b>Metal Thickness</b>	• 0.8mm
<b>Materials</b>	• SECC
<b>HDD Backplane</b>	• 12Gb/s mini-SAS HD or SAS/SATA
<b>Net Weight</b>	• 7.8kg
<b>Gross Weight</b>	• 9.8kg
<b>Cubic Feet</b>	• 2.94
<b>Container Info.*</b>	• 20': 350, 40': 734, 40'H: 820

### 12Gb/s Backplane

<b>P/N</b>	• 80H10220921A1
<b>Dimension (W x H)</b>	• 108 x 114mm
<b>Backplane Type</b>	• Passive
<b>Host Interface</b>	• 4 x SFF-8448
<b>HDD Interface</b>	• 4 x SFF-8680
<b>SAS Expander</b>	• N/A
<b>Tool-less Installation</b>	• N/A
<b>Features</b>	• SGPIO, Temperature Monitoring, Smart Fan, I2C



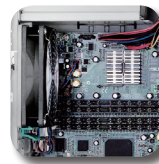
<b>P/N</b>	• 80H10220923A0
<b>Dimension (W x H)</b>	• 108 x 114mm
<b>Backplane Type</b>	• Passive
<b>Host Interface</b>	• 1 x SFF-8643
<b>HDD Interface</b>	• 4 x SFF-8680
<b>SAS Expander</b>	• N/A
<b>Tool-less Installation</b>	• N/A
<b>Features</b>	• SGPIO, Temperature Monitoring, Smart Fan, I2C



### Optional Items

	Order Code	Description
<b>Cable</b>	26H03220907B0	USB3.0, 900mm, Rev. A0
<b>HDD Cage</b>	84H220910-062	4-bay, 3.5", Internal, 92mm fan
	84H220910-085	4-bay, 3.5", 12Gb/s SAS/SATA, 80mm fan
	84H220910-087	4-bay, 3.5", 12Gb/s mini-SAS HD, 80mm fan
	84H220910-084	6-bay, 2.5", 6Gb/s mini-SAS, 80mm fan
<b>Slide Rail</b>	84H210710-024	26" Ball Bearing
	84H210510-004	Rackmount ears, 2pcs/set, for SR20966 only

※ PSU ※ M/B Support ※ I/O Gasket ※ Air Duct ※ (Detailed in CHENBRO websites)



1 x rear 120mm PWM fan



Tool-less card retainers



3 x 5.25" bays for ODD or storage kits



Removable HDD cage

### Order Information

Order Code	M/B	Backplane	Cooling Fan(mm)	PCI Slot	PSU	Slide Rail
SR20966	12" x 9.6"	Option	1 x 120mm	5 x FF + 2 x HL	Option	Option
SR20969	12" x 9.6"	Option	1 x 120mm	5 x FF + 2 x HL	Option	N/A
SR20969-C0	12" x 9.6"	N/A	1 x 120mm + 1 x 92mm	5 x FF + 2 x HL	Option	N/A
SR20969T3-C4	12" x 9.6"	12Gb/s/ SAS/SATA	1 x 120mm + 1 x 80mm	5 x FF + 2 x HL	Option	N/A